

ELVIRA I

✓ absinthe	Palmlight	barroom (13)
✓ aconite	Propitious Surprise	garden
✓ algae	Wooden Heart in Algae Sauce	
✓ belladonna	Spagetty Confusion, Fingerlight, Palmlight	outsideshed (3)
✓ beetles	Knightyme Pleasure	dungeon cells
✓ bird feather	Knightyme Pleasure	body of falcon
✓ bird's egg	Sizzling Egges	maze
black lotus	Painfree	
✓ bleeding heart	Wooden Heart in Algae Sauce	garden
blood lily	Iced Magick	
✓ bloodroot	Mind Locke	garden
✓ centipedes	Palmlight	dungeon cells
✓ dandelions	Alphabet Soup, Glowing Pride	garden
✓ deadly nightshade	Knightyme Pleasure, Fingerlight, Demon's Brew	outside shed (10)
✓ dogwood	Wooden Heart in Algae Sauce	garden path
dragon's blood	Demon's Brew	
✓ earwigs	Fingerlight	dungeon cells
✓ elderberries	Alphabet Soup, Mushroom Tenderness	garden
✓ fern	Maiden's Turnover, Manticore Flip	maze
✓ firethorn	Sizzling Egges, Thorny Splinter	garden path
✓ flame flower	Fire Sponge, Glowing Pride	garden path
✓ four-leaf clover	Lucky Surprise, Propitious Surprise	outside falcon's field (2)
✓ hawthorn	Clotted Surprise, Iced Magick, Fire Sponge	garden
✓ hay	Herbal Honey	courtyard outside stable
✓ hellebore	Sizzling Egges, Mushroom Tenderness	garden
✓ honey	Herbal Honey, Wooden Heart, Maiden's Turnover, Manticore Flip	pantry (4)
✓ horse hair	Cat & Dog Broth	stable
✓ ivy	Monstera Pie	side of towers
✓ laudnum	Painfree	bathroom
lily flower	Cat & Dog Broth	
✓ maggots	Brain Ache, Mind Locke	body of gardener (2)
✓ maidenhair	Maiden's Turnover, Manticore Flip	garden path, upper right of hedge arch
✓ manticore hide	Manticore Flip	prayer book in Chapel
✓ mistletoe	Palmlight	outside garden facing target
✓ monstera	Monstera Pie	living room
✓ moss	Clotted Surprise, Fire Sponge, Ice Sponge	well (2)

✓ mushrooms	Brain Ache, Mushroom Tenderness	<i>outside hedge arch</i>
✓ nettles	Lucky Surprise, Propitious Surprise, Thorny Splinter	maze
✓ parsley	Spagetty Confusion, Monstera Pie	garden
✓ plantain	Fire Sponge, Ice Sponge	garden
✓ poppies	Brain Ache, Mind Locke	outside garden
✓ rose petals	Alphabet Soup	garden
✓ spider	Cat & Dog Broth	<i>dungeon cells</i>
✓ spiderwebs	Clotted Surprise, Maiden's Turnover	dungeon <i>consider</i>
✓ thistle	Iced Magick, Glowing Pride	maze
✓ vampire dust	Demon's Brew	<i>kill vampire on 2nd floor</i>
✓ water lily	Sizzling Egges	
✓ white wine	Spagetty Confusion, Painfree	pantry
✓ witch hazel	Spagetty Confusion, Cat & Dog Broth	garden

missing:

- algae
- black lotus
- blood lily
- dragon's blood
- water lily
- 10th spider

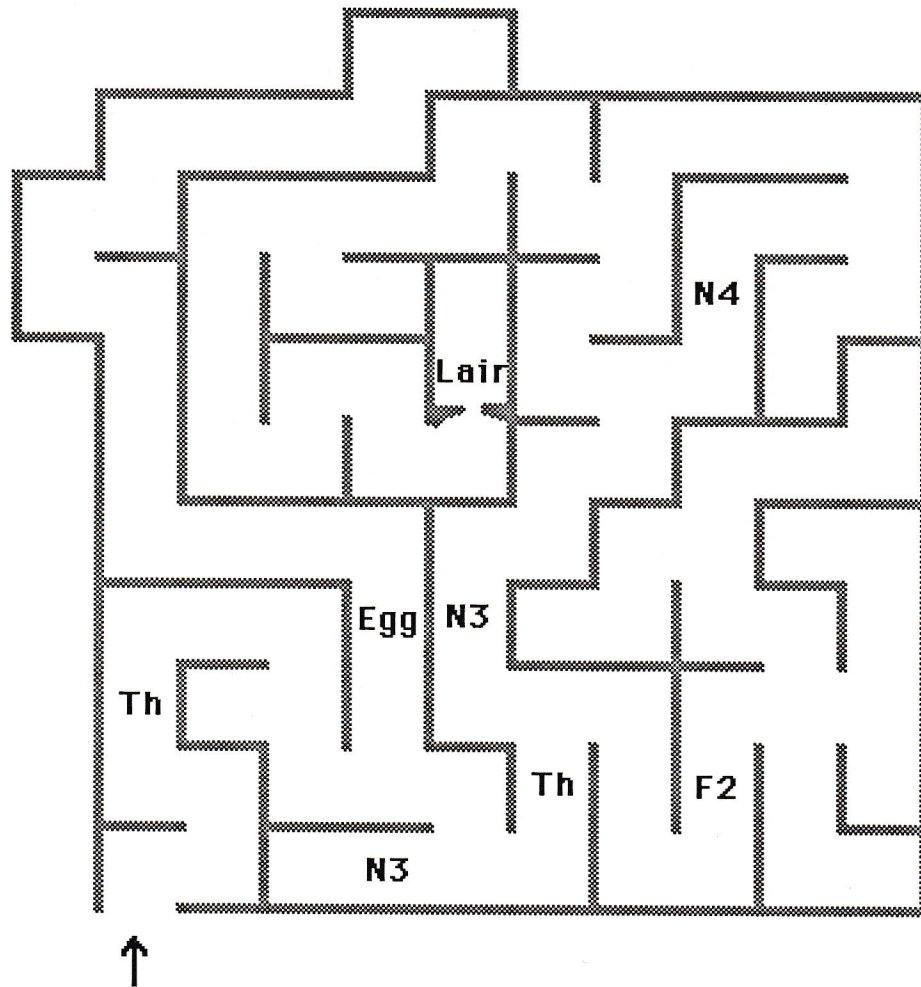
✓ Herbal Honey	honey, hay	know plant names
✓ Alphabet Soup	dandelions, elderberries, rose petals	able to read runes
✓ Brain Ache	poppy, mushrooms, maggot	cast Brain Ache spells
✓ Mind Locke	poppy, maggot, bloodroot	cast Mind Lock spells
✓ Spagetty Confusion	belladonna, parsley, white wine, witch hazel	cast Tangled Mind spells
✓ Sizzling Egges	bird's egg, hellebore, firethorn, water lily	cast Knockout spells
✓ Clotted Surprise	spider web, hawthorn, moss	poultice for minor injury
✓ Iced Magick	hawthorn, thistle, blood lily	poultice for major injury
✓ Wooden Heart in Algae Sauce	dogwood, algae, bleeding heart, honey	for powerful healing
✓ Painfree	white wine, black lotus, laudnum	remove pain for 3 hours
✓ Fire Sponge	plantain, flame flower, moss	eat for 10 second Fire Wall (6 slices)
✓ Ice Sponge	plantain, hawthorn, moss	eat for 20 second Ice Wall
✓ Maiden's Turnover	maidenhair, fern, 3 spider webs, honey	toughens skin as if armor, not useful vs. magick attack (3 packets)
✓ Manticore Flip	maidenhair, fern, 3 pieces of manticore hide, honey	greater toughening of skin (3 packets)
✓ Knightyme Pleasure	bird feather, deadly nightshade, beetles (5)	total protection vs. all non-contact magick and halves damage from any other weapon. Rare; save til needed.
✓ Lucky Surprise	nettles, four-leaf clover	react quicker; adds 1/10th to Dexterity; causes drowsiness when eaten to excess.
✓ Propitious Surprise	aconite, nettles, four-leaf clover	react quicker; no drowsiness with multiple doses. (adding aconite to Lucky Surprise makes a deadly poison!)
✓ Monstera Pie	monstera, parsley, ivy	stronger, but slightly slower (5 slices)
✓ Glowing Pride	thistle, dandelion, flame flower	ball glows in proportion to experience; store in darkness until needed.
✓ Mushroom Tenderness	hellebore, elderberries, mushroom	superhuman strength for short time (4 doses)
✓ Thorny Splinter	firethorn, nettles	cast Fire Dagger spells
✓ Fingerlight	earwigges, deadly nightshade, belladonna	cast Fingerlight spells (lighting bolts)
✓ Palmlight	centipedes, mistletoe, belladonna, absinthe	drink immediately; cast Palmlight spells (lighting balls)

Cat & Dog Broth	(10) spider, horse hair, lily flower, witch hazel	boost to strength & health; cast Thunderflash spells
Demon's Brew	vampire dust, dragon's blood, deadly nightshade	MUST discard sediment on consecrated ground! drink for Fearful Spells to do amazing damage.

evil spirit : we need a defensive spell of some sort

- Kryptyme Pleasure is insufficient
- Ice Wall; Fire Wall seem ineffective.
- Propitious Surprise?
- Montecore Flip?
- Painfree??

Hedge Maze

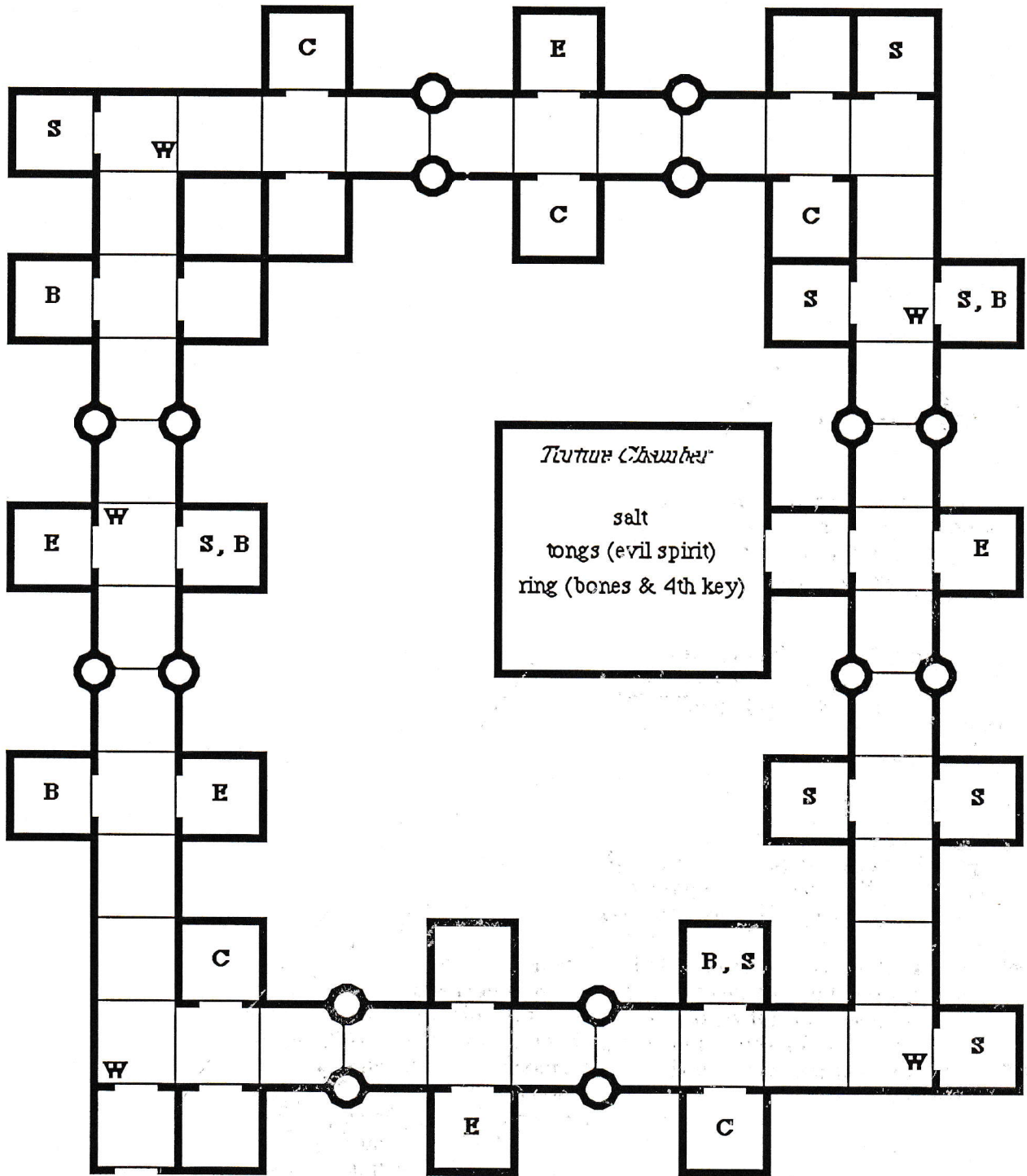


Th = Thistles
N = Nettles
F = Fern
Egg = Bird's Egg

Gremlins infest the maze and are numerous in the lair. One hit destroys them, but they burst into flame destroying one item at random in your inventory -- if they're too close. If you delay, they'll fire off a fireball which does much the same thing. You'll lose strength and life when too close to a gremlin. Always use long distance attacks! To enter lair is suicide; firing into the lair is recommended.

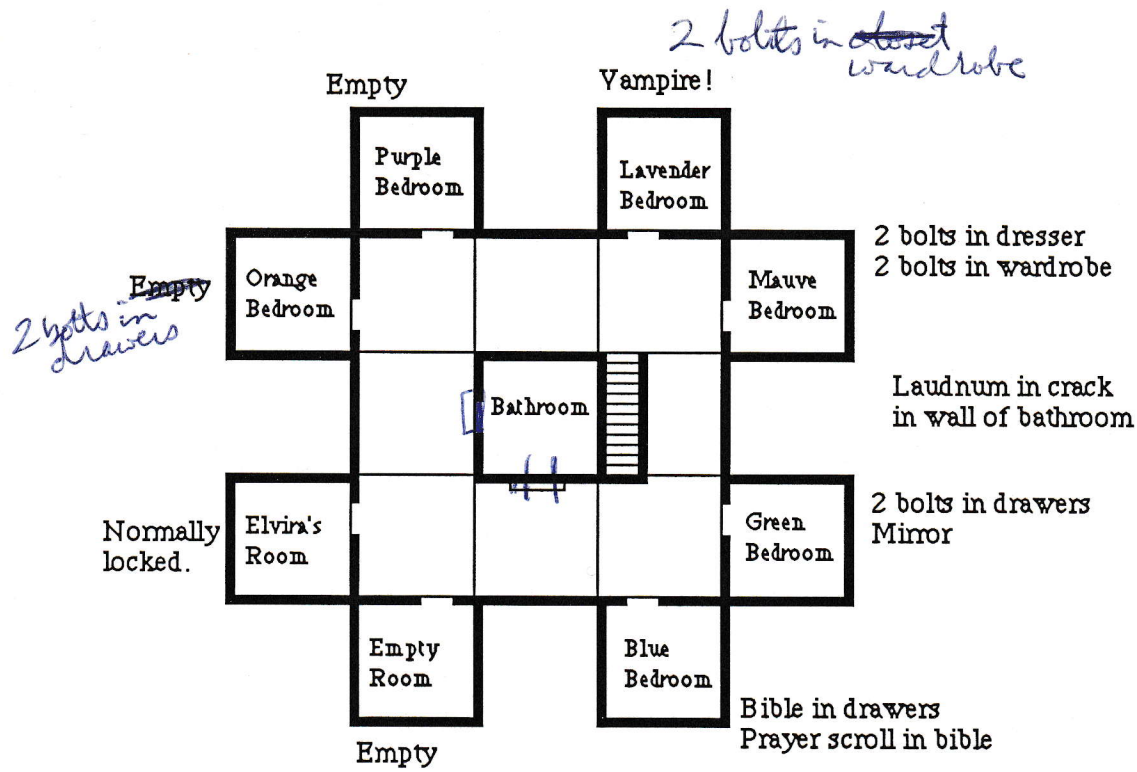
Unknown what the lair conceals.

Dungeon Level

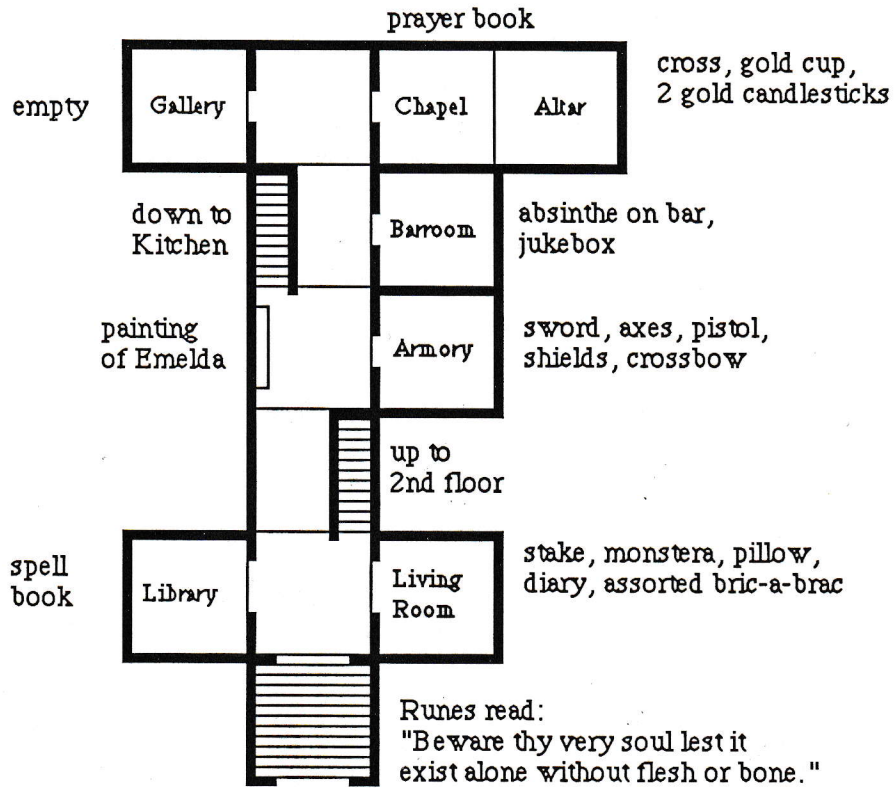


Passage

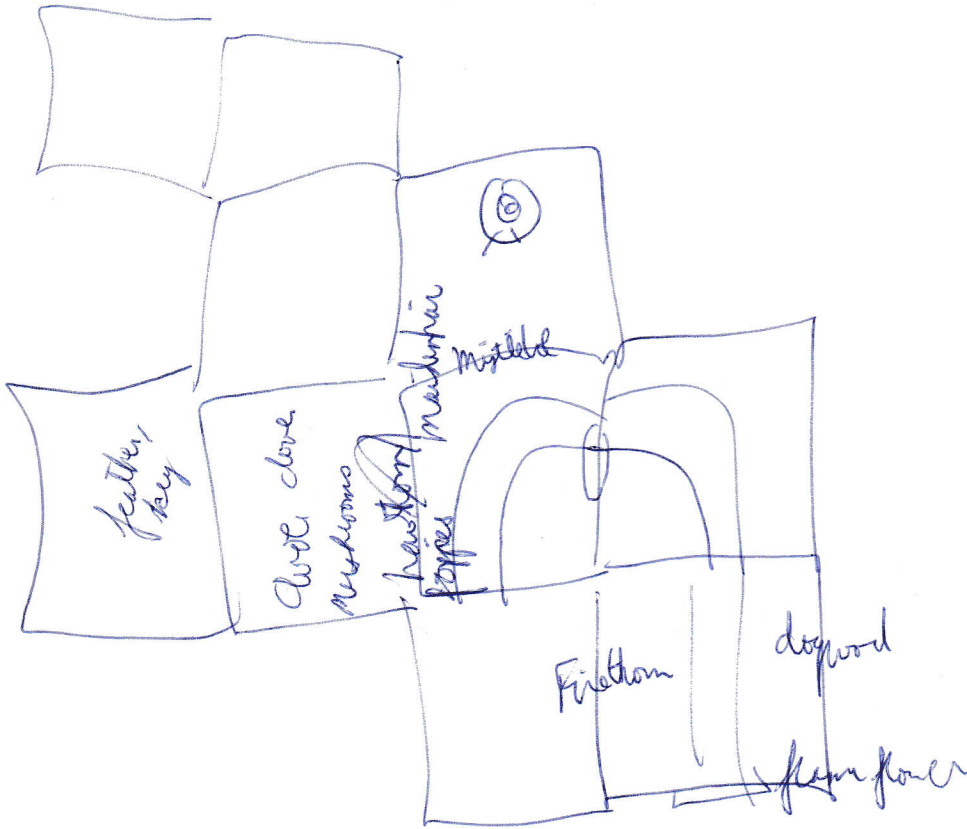
<p>5 W = webs 5 C = centipedes 5 E = earwigs 5 B = beetles 10 S = spiders</p>	<p>Insects can be found in one of five locations in a cell: bench, stool, straw, pillow or bed. Spiderwebs are in upper right corners.</p>
------------------------------------------------------------------------------------------------------------------------------------------------------------------------------------------------------	--------------------------------------------------------------------------------------------------------------------------------------------

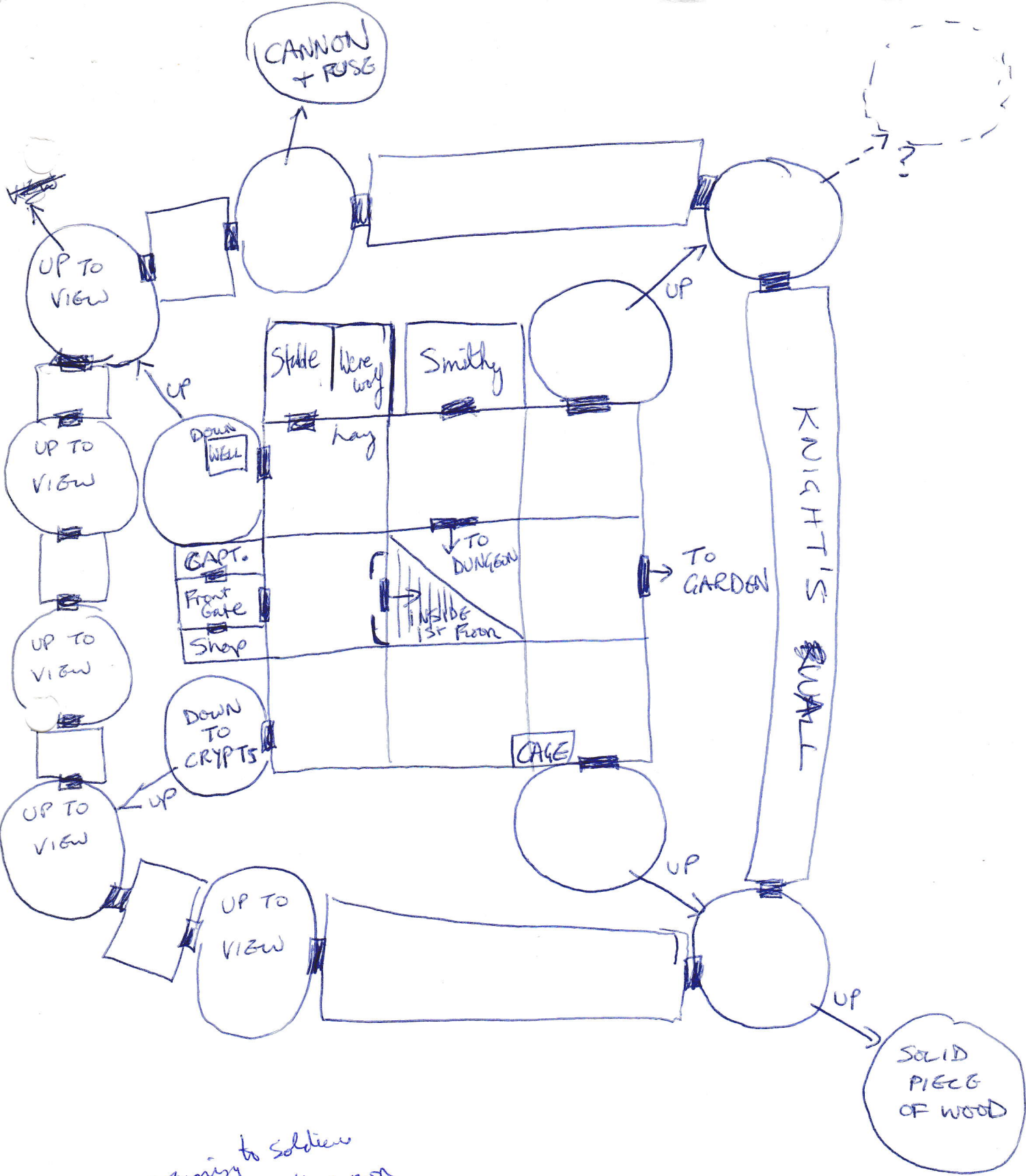


2nd floor

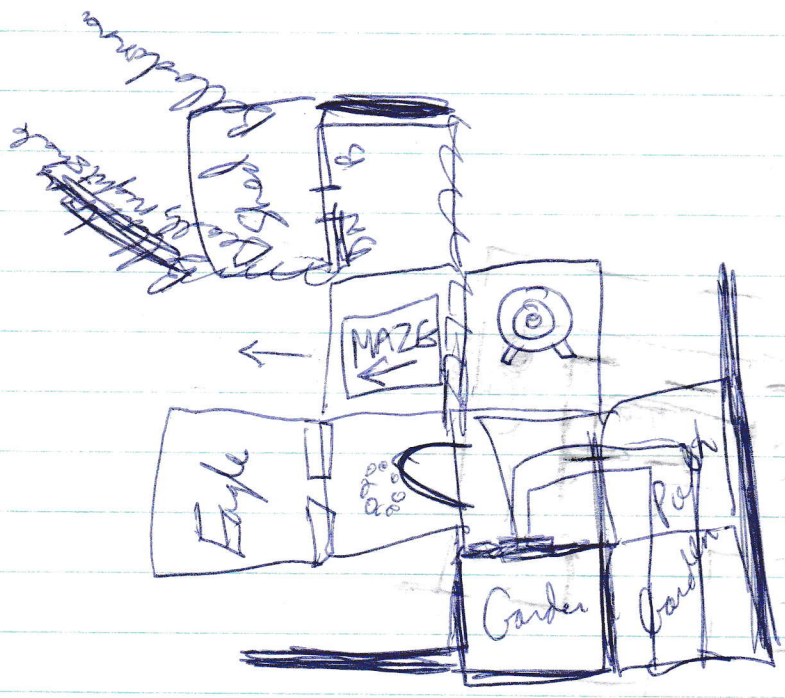
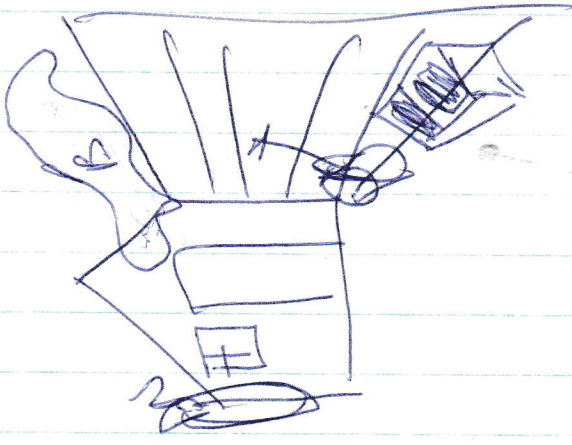


1st Floor

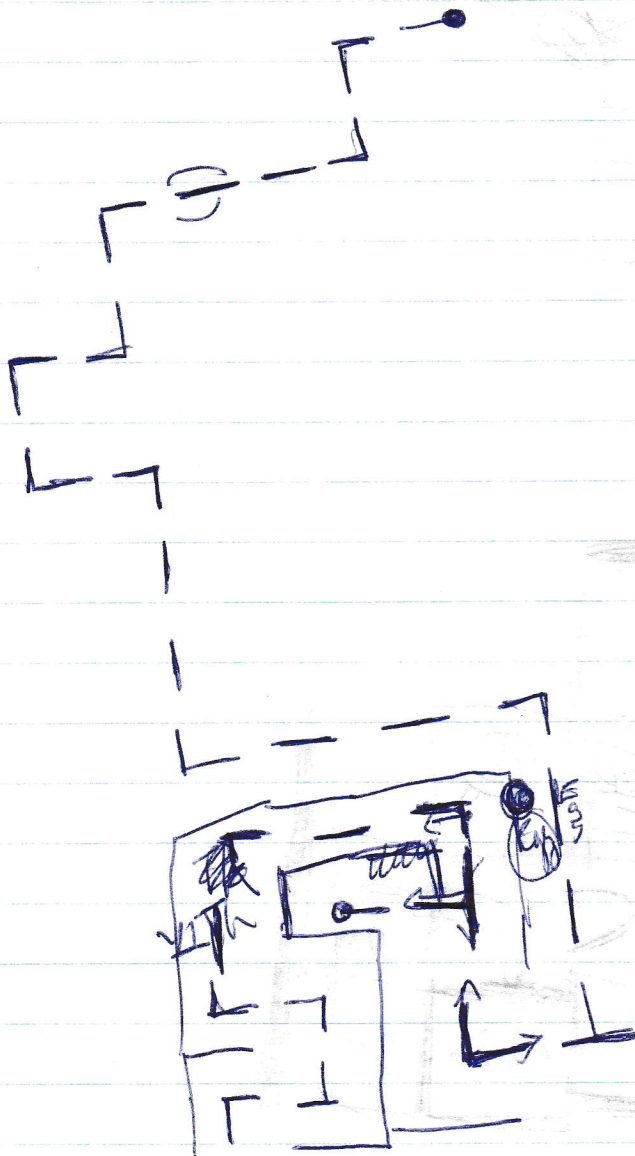




Warning to Soldiers
not to remove the crown



Garden



Enter

To kill yourself -
 wait until hound
 click on silver bolt
 click USB
 (before lunge)